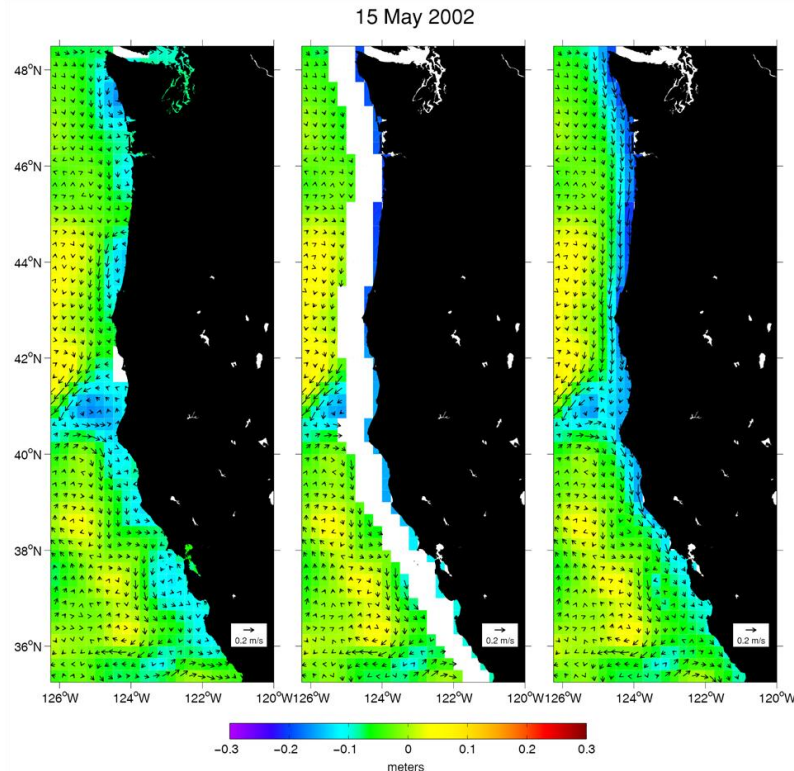


Gridded Altimeter Fields with Enhanced Coastal Coverage



Gridded AVISO 0.25° DT UPD MSLA version 3.0 fields were merged with NOAA CO-OPS tide gauge data to produce high-resolution sea surface height anomaly (SSHA) fields in the nearshore region of the California Current System (35.25 - 48.5° N and 227.75 - 248.5° E). Weekly composite SSHA and derived geostrophic velocity fields are now available, for the period 14 October 1992 through 04 November 2009, at <ftp://podaac.jpl.nasa.gov/>.



This data set is unique in that it covers the 50-75 km wide region next to the coast that is not sampled by altimeters.

(Courtesy of
C.M. Risien)

ftp://podaac.jpl.nasa.gov/sea_surface_height/coastal_alt/L4/OSU_COAS/

Cooperative Institute for Oceanographic Satellite Studies