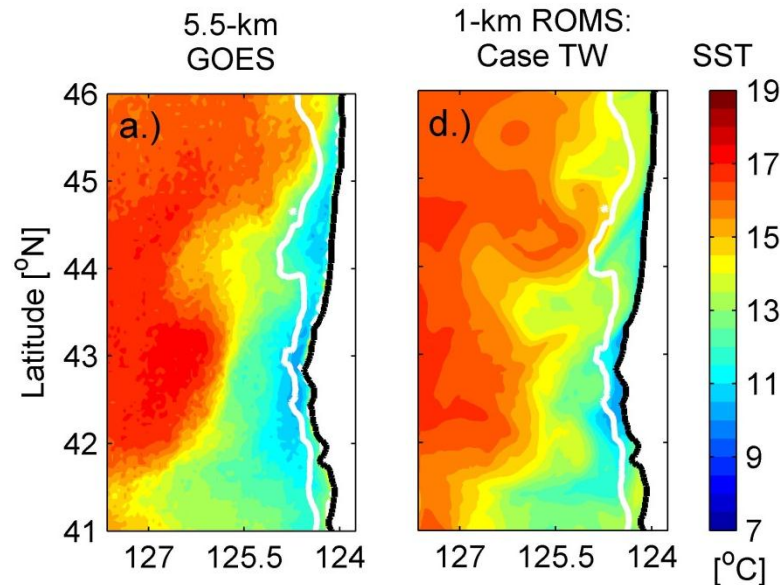


Evaluation of utility of satellite SST products for the coastal ocean forecast model off Oregon



We have compared outputs of the coastal ocean circulation model and available satellite sea surface temperature (SST) data. The model reproduces the extent of the cold upwelling front qualitatively correctly. Assimilation of SST data (combining the model and data in an optimal way) would help to constrain location of eddies and jets in the coastal zone.

Comparison of the (left) observed and (right) modeled monthly averaged SST (August 2002).



Accurate prediction of the front location is important to fisheries. Prediction and forecasting of surface currents would be important in search and rescue operations and environmental hazard response in coastal waters.