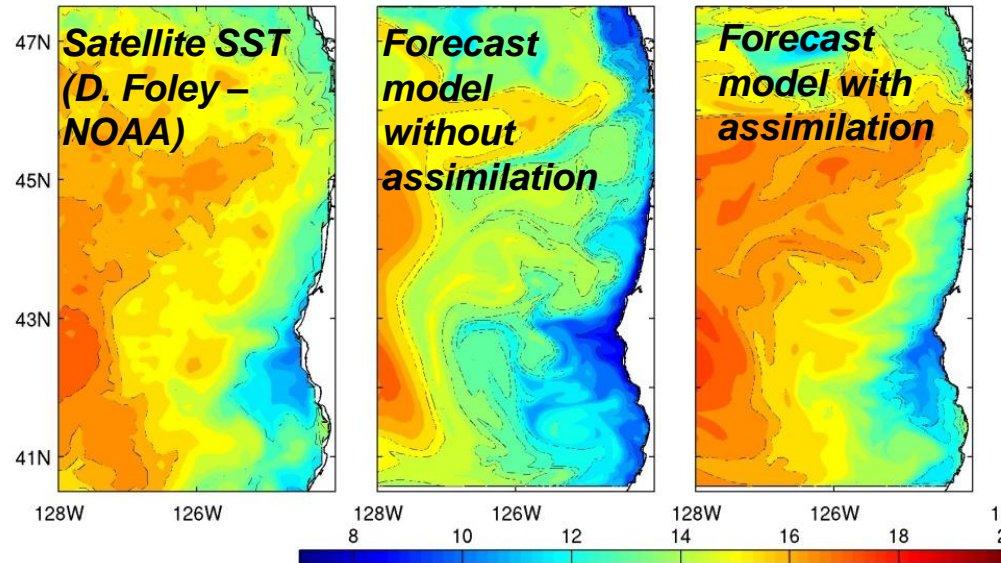




Coastal Ocean Data Assimilation

The variational data assimilation component has been added to the pilot Oregon coastal ocean forecast system. It uses observations of surface currents and satellite temperature to improve model forecasts.

Shown: Effect of assimilation on the model estimate of sea surface temperature - SST(12 Sept., 2010)



Assimilation of near-real time data has helped to improve accuracy of 3-day forecasts of surface currents and temperature. These forecasts will provide support for search&rescue, environmental hazard response, fisheries.

<http://www-hce.coas.oregonstate.edu/~orcoss/ACTZ/SSCforecast.html>

(Courtesy of A. Kurapov)

Sponsor: NOAA-CIOSS