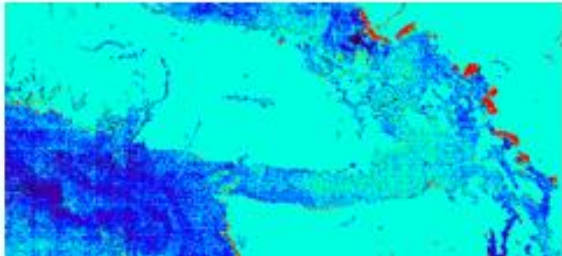




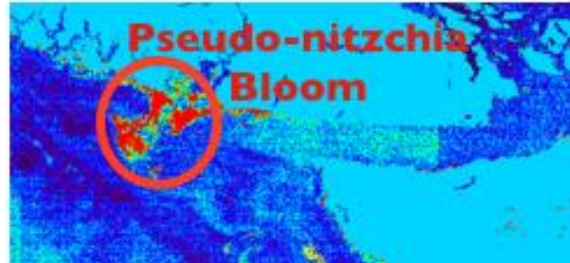
Automated processing of MERIS FR data

Use of the archive of MERIS FR data from 2005 to present has been limited to single scene processing with BEAM. Adapting the newly released ODESA operational processor we can now provide operational processing and sub setting of the data for the West Coast.

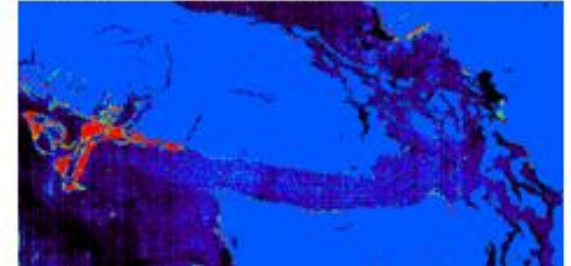
MERIS MCI 2011 08 29



MERIS MCI 2011 09 03



MERIS MCI 2011 09 04



MERIS FR MCI product showing the development of a harmful algal bloom off Vancouver Island, Canada, Sept. 2011.

MERIS Full Resolution (300 m) data Processed with the ESA Neural Network coastal algorithms provides the best data for broad coverage of coastal waters. Two keys for using it in U.S. waters are making the processing operational with the just released processor and then validating products.

<http://meris.coas.oregonstate.edu>

(Courtesy of N. Tufillaro and C. Davis)

Sponsor: NOAA-CIOSS